

Preimplantation Genetic Testing

Preimplantation Genetic Testing for Monogenic Disorders (PGT-M)

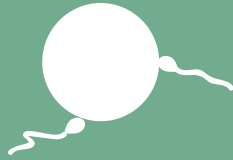
Testing for specific (known) genetic condition

Preimplantation Genetic Testing for Aneuploidy (PGT-A)

Testing for overall number of chromosomes in embryos

1

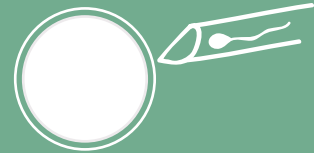
In Vitro Fertilization



or

ICSI

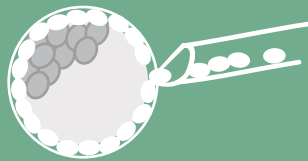
Intracytoplasmic Sperm Injection



2

Trophectoderm Biopsy

Removal of ~5-10 cells for testing



- Inner cell mass (fetal cells)
- Trophectoderm (placental cells)

3

Embryos are frozen



4

Analyze

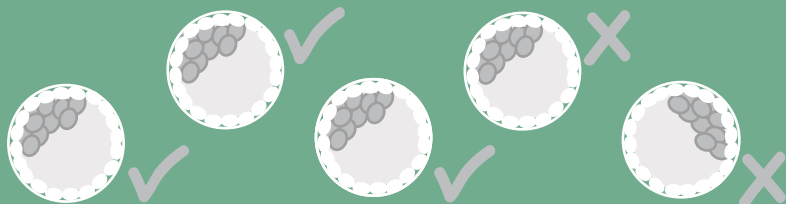
DNA and/or chromosomes



5

Results

Normal or abnormal



6

Transfer embryo(s) to uterus

